



Load capacity: Class A (15kN test load) EN 124

Materials: Frame in extruded aluminium. Cover in extruded aluminium bonded to a composite aluminium honeycomb panel (with a white coating). Stainless steel screw connections. EPDM sealing

Features: Modern lightweight-construction access cover. Major weight-savings compared to concrete-filled access covers. Opening the light cover couldn't be easier. As the cover is not filled with concrete, **installation is quicker and simpler**. There is a **recess of 24mm** for laying slabs, tiles, parquet etc. In the case of thin tiles, the difference in height can be compensated for by using a suitable tile adhesive (MAPEI Keralastic) and waterproof building board. Sealed design with a very high-quality finish. Very attractive surface, particularly the visible edges. Inconspicuous corner joints make it easy to connect tiles, slabs etc.

Opening with the Lift-Off System:

Every HAGODECK Type CLA composite light aluminium comes with a set of lifting keys and detailed installation instructions.

The HAGO advantage: Jammed covers are released by simply turning the Golden Key.

Recommended applications: As a cover inside buildings (pedestrian traffic only), which can be opened by 1-2 persons (depending on the size of the cover) without great effort.

Installation: Installation has to be carried out according to our installation instructions. In the case of water tight covers, care must be taken to seal the outer frame into the surrounding floor. Attach slabs or tiles fully (over the whole surface) with a suitable tile adhesive (MAPEI Keralastic). In the case of thin tiles or slabs, use waterproof building board to compensate for the difference in height.

Specification clause: Aluminium composite access cover, lightweight construction with honeycomb core,

Type HAGODECK CLA, clear opening x cm, leaving a recess of 24mm suitable for site finishing with the architects choice of floor finish, sealed, with Golden Key Lift-Off opening tools, 15 kN (EN 124). Installation to be carried out according to the manufacturer's instructions.

Producer: HAGO 4600 Wels, Austria. www.hago.at



Type CLA composite light
The super-lightweight cover

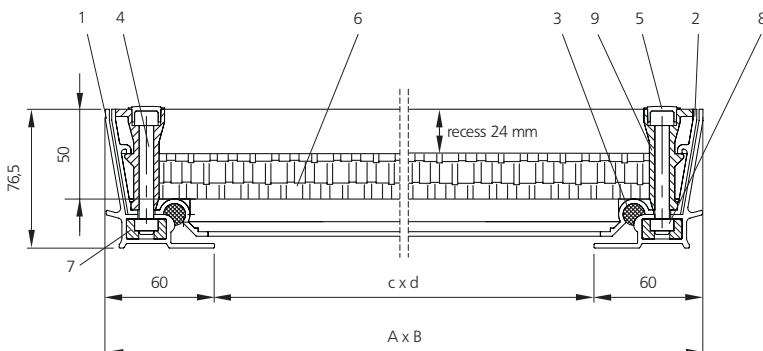
Type	Clear dimensions of shaft (approx. cm) c x d	Outside dimensions (approx. cm) A x B	Weight without floor finish	S/O*
CLA 22	20 x 20	32 x 32	3 kg	S
CLA 33	30 x 30	42 x 42	5 kg	S
CLA 44	40 x 40	52 x 52	7 kg	S
CLA 55	50 x 50	62 x 62	9 kg	S
CLA 64	60 x 40	72 x 52	9 kg	S
CLA 66	60 x 60	72 x 72	10 kg	S
CLA 86	80 x 60	92 x 72	12 kg	S
CLA 88	80 x 80	92 x 92	15 kg	S
CLA 106	100 x 60	112 x 72	15 kg	S

Cover depth approx. 6,6 cm, installation height approx. 7,6 cm

Special sizes possible

*S= available from stock, *O= to order

Type CLA composite light aluminium



- 1 Frame
- 2 Cover
- 3 Seal
- 4 Allen screw (stainless steel)
- 5 Plastic cap
- 6 Aluminium-honeycomb plate (with white coating)
- 7 Injection-moulded part (plastic)
- 8 Square boss (stainless steel)
- 9 Die-cast corner (aluminium)